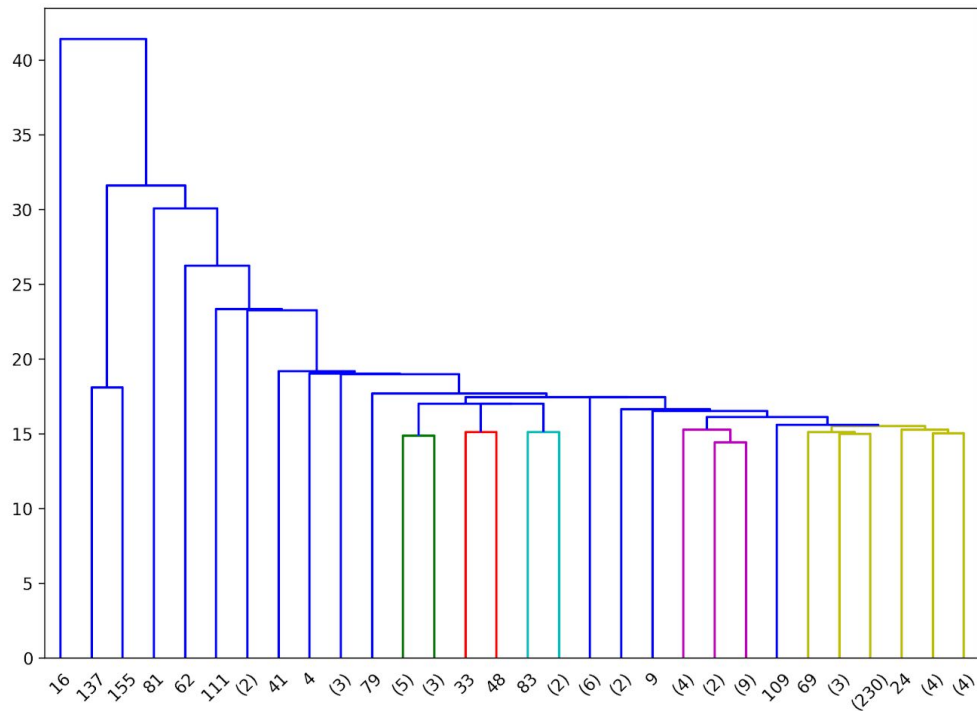
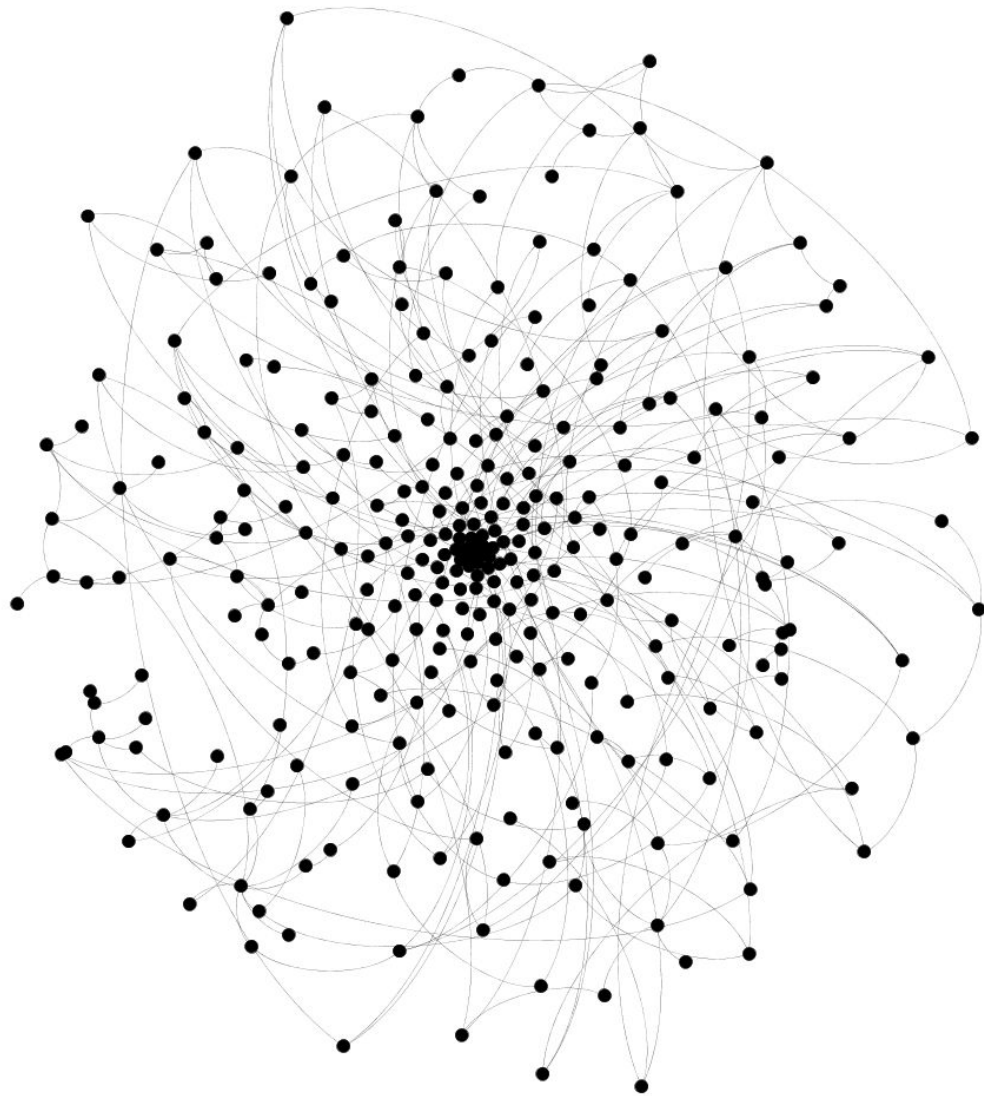


22th November 2019

Mostrare tutti i cluster con gephi	
con leiden ho il risultato con 13 cluster e settare una soglia per trovare un numero di cluster di circa 13	



Threshold set at $.28 * \max(X[:2])$ + truncate technique from [the main doc](#).



Cluster in gephi v1

todo: plot node information: weight

So far:

1. Clusters + documentation
2. Journals + 2 iterations (soon 3rd) → spatial-temporal
 - a. spatial-temporal
3. AIUCD 2020 data
4. Define DH clusters
 - a. cumulative distribution
 - b. topic modeling
 - c. with threshold + perc in and perc out (quanto prendo e quanto lascio fuori)
 - d. top journals

- e. distance-based clustering (hierarchical + Leiden)
- f. retrieve DH pubs (but can we take all pubs even tho some of them are only significantly?)